



SHORES ESTATES SEPTIC TO SEWER CONVERSION

Resident Informational Meeting
March 5, 2025, 6:30PM
9900 2nd Ave., Miami Shores, FL 33138

AGENDA

1. BRIEF HISTORY OF THE PROJECT
2. INTRODUCTION OF THE PROJECT TEAM
3. PROJECT DESCRIPTION / SCOPE
4. CONSTRUCTION DETAILS
 - a. Schedule
 - b. Street closures
 - c. Alternate routes
 - d. What's expected of the residents
5. SANITATION CONCERNS
 - a. ACE
 - b. Garbage, Recycling, and Bulk pickup
6. SECURITY CONCERNS
7. QUESTIONS

PROJECT TEAM



Kimley»»Horn



2025

2026

Feb Mar Apr May Jun Jul Aug Sep Oct Nov Dec Jan Feb

Shores Estates Septic to Sewer Conversion

Project Duration

Mobilization ETA

Phase 1 - Lift Station

Phase 2 - 105th Street & NE 11th CT

Phase 3 - 105th Street & 11th Ave

Phase 4 - NE 105th

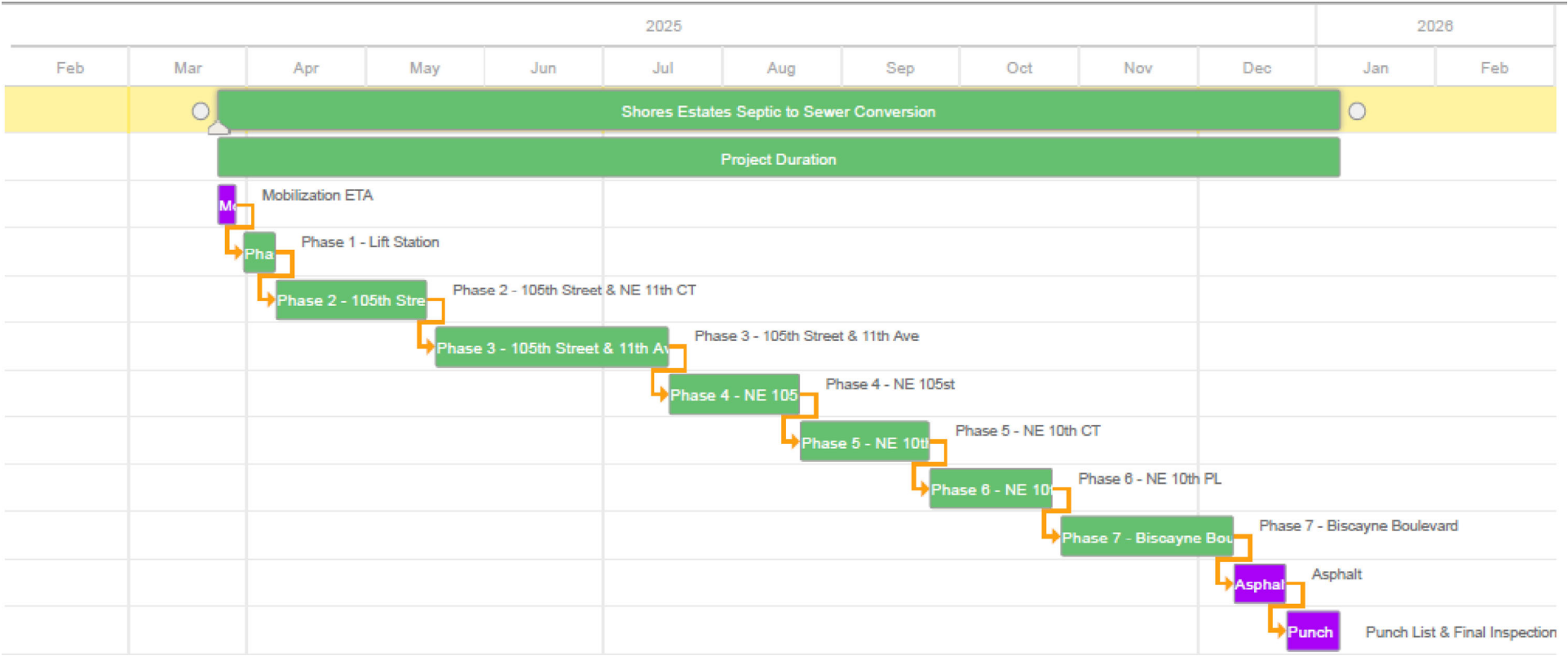
Phase 5 - NE 10th CT

Phase 6 - NE 10th PL

Phase 7 - Biscayne Boulevard

Asphalt

Punch List & Final Inspection



SANITATION CONCERNS

ALLEYWAY CLEANUP EXPERIENCE(ACE)

A) LIMBS AND BRANCHES MUST BE A MINIMUM OF 6FT. FROM SERVICE LINES

B) NO VEGETATION OF ANY KIND - TREES, SHRUBS, VINES TO EXTEND INTO ALLEY ROW - SEC. 20.06, SEC. 20.07 (3)

C) CONTAINER IN GOOD CONDITION, ALLEY CLEAR, NO RAW GARBAGE ON THE GROUND

D) ALL LEAVES MUST BE BAGGED

E) PLANTING OF TREES, SHRUB, VINES IN ALLEYWAY (PUBLIC ROW) IS PROHIBITED

F) NO OBSTRUCTION OF ALLEYWAY BY VEGETATION, DEBRIS, VEHICLES OR TRASH - SEC. 20.19

MIAMI SHORES VILLAGE
INCORPORATED 1960
MIAMI BEACH, FLORIDA

The infographic features a dark blue header with the title in white. Below the header is a photograph of an alleyway with various callouts. A trash bag is visible in the foreground, and a trash can is further down the alley. The background shows trees and utility lines.



SECURITY CONCERNS



QUESTIONS?